

## Technomad Mounting Solutions Overview

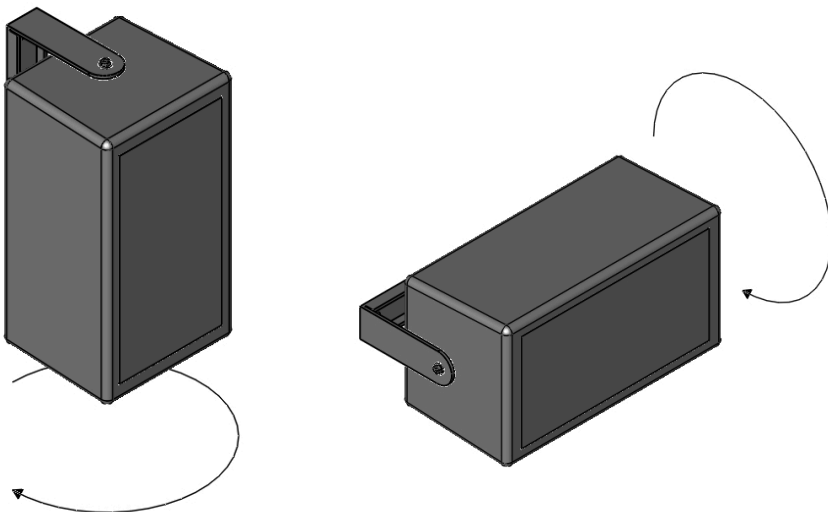
Technomad offers several robust options for permanent installation of our audio products. While all brackets and mounting options have been engineered to support our products, it is the ultimate responsibility of the installer to ensure that a product has been safely mounted in a way to reduce risk. The use of safety cables is always recommended.

### MP Series Loudspeakers

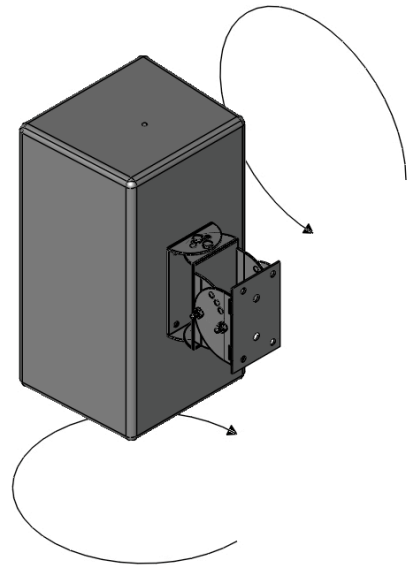
There are two primary mounting options offered by Technomad for the MP Series of speakers: yoke-mount brackets and wall-mount brackets. Both styles are made with stainless steel.

#### Yoke-mount Brackets

Model specific yoke-mount brackets are available for each loudspeaker and mount to the speakers using molded in 1/4-20 stainless inserts on each end of the speaker. MP Series speakers can be mounted either horizontally or vertical using these yoke-mount brackets. MP Series yoke-mount brackets are finished with black powder-coat as a standard finish. Custom colors are available.



**Vienna with yoke-mount bracket, vertical and horizontal installation available, one point of rotation**



**Vienna with wall-mount bracket vertical orientation, two points of rotation**

The yoke brackets must be secured to the mounting surface using at least two 1/4-20 bolts with hardware appropriate for the material surface material. If being strapped to a pole, weather-resistant banding should be used.

#### Wall-mount Brackets

There is as a wall-mount bracket for the Vernal and a wall-mount bracket which works with both the Vienna and Paris models. Both products are three piece designs which bolt to the threaded inserts on the rear of the speaker cabinet with included 1/4-20 stainless bolts and provide fixed pan and tilt adjustments. The position is mechanically locked in using the assembly bolts for the bracket which eliminates any sagging over time. The brackets allow the speaker to be panned up to 45° and tilted downwards by 60° off of vertical. The downward tilt is typically limited by the back edge of the cabinet hitting the vertical surface before the max. down angle allowed by the bracket is achieved.

**Technomad**  
Audio. Anywhere.

5 Tina Drive, South Deerfield MA 01373 USA  
800.464.7757 • fax 1.617.535.9712  
www.technomad.com • sales@technomad.com

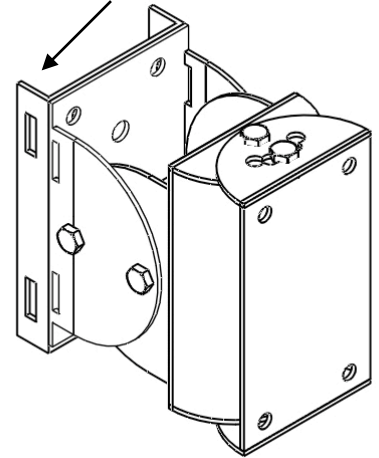
## Technomad Mounting Solutions Overview

### Pole mounting MP Series speakers

When using a yoke product, the installer can use 3/4" stainless banding with the appropriate, rated closure system to strap the bracket to a pole.

The Vernal wall-mount bracket can be used on a pole simply by using stainless banding to strap the wall plate portion of the bracket assembly to the pole. For the Vienna/Paris bracket which has a wider wall plate, Technomad offers a MP pole mount adaptor which provides a matching U-channel plate to eliminate any rocking of the bracket on the pole. The Vienna/Paris bracket also features three slots on the wall plate to accommodate 3/4" banding.

**MP Pole adaptor  
w/ banding slots**



**Vienna/Paris bracket shown with  
optional MP Pole adaptor plate**

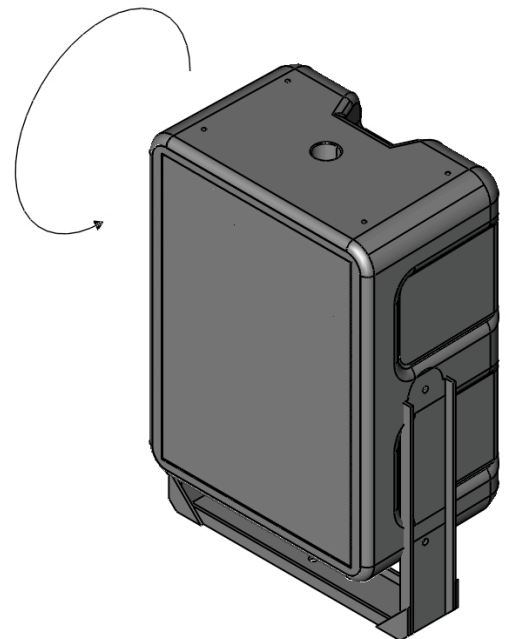
### AS Series Loudspeakers

There are two primary mounting options offered by Technomad for the AS Series of speakers - yoke-mount brackets and wall-mount brackets. The yoke-mount brackets for the Berlin, Noho and Soho models are heavy-duty hot-dip galvanized steel with a powder-coat finish. The AS series bracket (for Berlin, Noho and Soho speakers) is unfinished stainless steel. The Oslo mounting bracket is stainless steel with a powder coat finish.

#### Yoke-mount Brackets

Model specific yoke-mount brackets are available for each loudspeaker and mount to the speakers using 3/8-16 stainless inserts on each side of the speaker. The yokes attached to the long sides of the cabinet and position the speaker in a vertical orientation. Due to the greater weight of the AS series products and yoke design, the AS series yoke-mount brackets should only be used to mount the speakers to a horizontal surface such as rooftop or the underside of an eave or overhang. For mounting to a vertical surface, the AS Series wall-mount bracket is recommended. To adjust horizontal aiming, the yoke can simply be rotated as needed where attached to the mounting surface.

Each AS series yoke bracket includes a lock bar. The lock bar bolts to the vertical web of the yoke and to one of the unused threaded insert fly points on the speaker and locks the speaker into its rotated position. Even under heavy wind load, the speaker is mechanically prevented from losing its orientation.



**Noho loudspeaker with  
Noho yoke bracket**

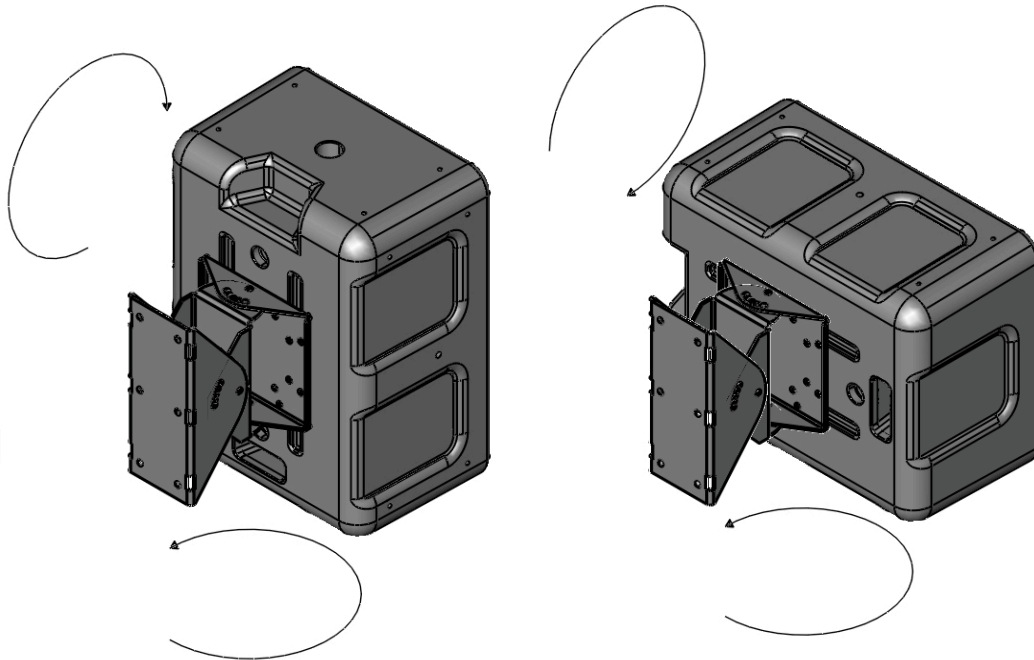
**Technomad**  
Audio. Anywhere.

5 Tina Drive, South Deerfield MA 01373 USA  
800.464.7757 • fax 1.617.535.9712  
www.technomad.com • sales@technomad.com

## Technomad Mounting Solutions Overview

### Wall-mount Brackets

The AS Series Wall-mount Bracket works with the Berlin, Noho and Soho models. The bracket is a three piece design which bolts to threaded inserts on the rear of the speaker cabinet with 5/16-18 stainless bolts. The bracket provides fixed pan and tilt adjustments which are mechanically locked in using the assembly bolts for the bracket. This eliminates any sagging over time. The brackets allow the speaker to be panned up to 36° to either direction and tilted 40° downwards. The downward tilt is typically limited by the back edge of the cabinet hitting the vertical surface before the max. down angle allowed by the bracket is achieved. The panning angle is similarly limited by the back of the cabinet hitting the vertical surface. Unlike the MP Series wall-mount brackets, AS Series speakers can be mounted in either a vertical or horizontal orientation using the wall-mount bracket as the speaker mounting plate portion of the bracket has holes for both.



**Noho loudspeaker vertically mounted  
with AS series wall-mount bracket**

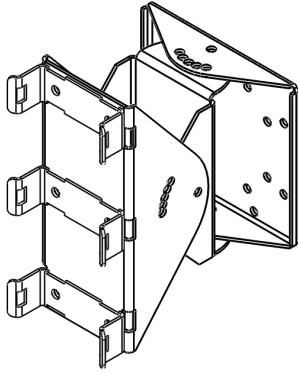
**Noho loudspeaker horizontally mounted  
with AS series wall-mount bracket**

### Pole mounting AS Series speakers

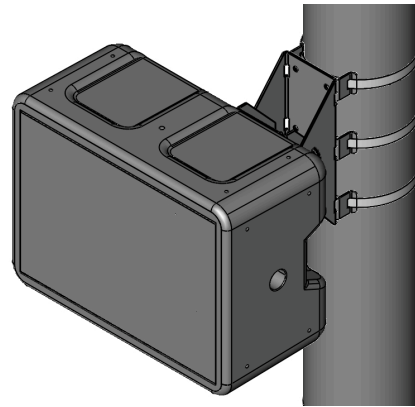
If a yoke-mount bracket is required, the Technomad yoke-mount brackets can be mounted to poles using pole adaptor solutions from Polar Focus or Adaptive Technologies. More often installers chose to use Technomad wall-brackets with pole adaptors instead as it is a less expensive option.

The AS wall-mount bracket can be used on a pole using stainless banding and a pole mount adaptor. There are two sizes of pole mount adaptor available - one for a 7" or larger diameter pole and one for a 7" or smaller diameter pole. Both attach to the wall plate portion of the bracket assembly to provide contact with the pole so that when mounted, the speaker and bracket will not rock side to side. After the appropriate adaptor has been mounted to the bracket, the assembly can be strapped to the pole using rated, 3/4" stainless banding with the appropriate fasteners.

## Technomad Mounting Solutions Overview



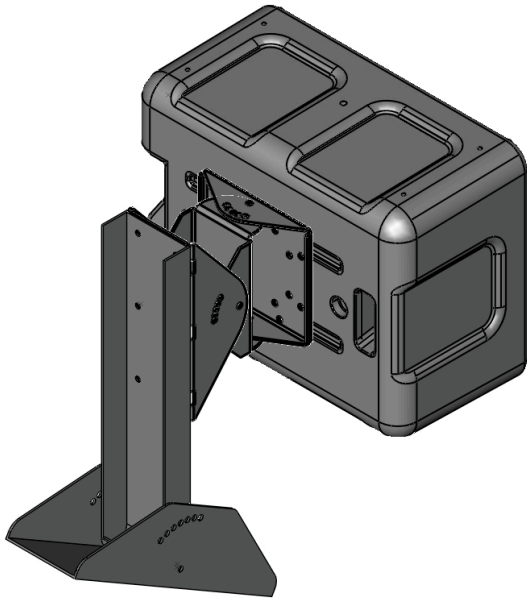
**AS Series Bracket with  
Large Pole Mount Adaptor**



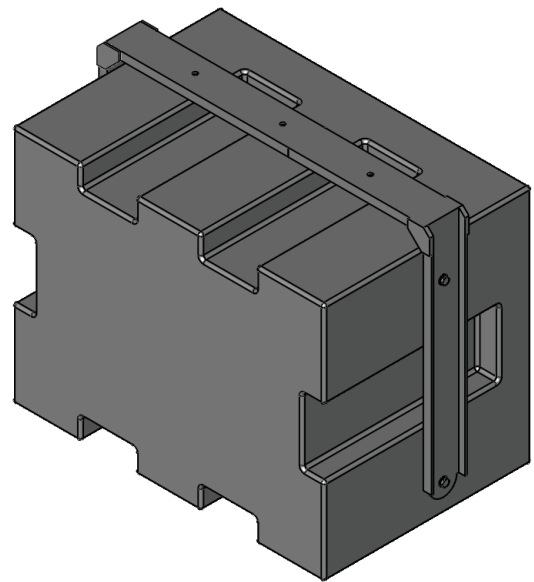
**Noho speaker mounted with AS Bracket,  
Large Pole Adaptor and banding**

### Roof mounting AS Series speakers

For mounting AS series speakers to a sloped roof, Technomad offers the Roof Adaptor for the AS wall-mount bracket. This robust stainless bracket is designed to mount to the roof and provide a vertical mounting arm to which the AS bracket and speaker can be attached. The Roof Adaptor offers a range of mounting angles from 0° to 60° in 10° increments to allow the installer to approximately match the roof angle.



**Noho loudspeaker mounted with AS series  
wall-mount bracket and Roof Adaptor**



**Oslo subwoofer mounted with  
Oslo yoke mount bracket**

### Oslo Yoke Mount bracket

There is one mounting option offered for the Oslo subwoofer - the Oslo Yoke Mount. As the Oslo has omni-directional output, there are no pan or tilt positions with the bracket. The yoke simply serves to allow the installer to securely mount the Oslo to either a horizontal or vertical surface. The bracket attaches to the top and bottom of the cabinet with 3/8 stainless bolts and offers several mounting holes to use with hardware to attach to the mounting surface.